



YESTERDAY'S  
COMFORT.

TODAY'S  
PERFORMANCE.

#### **WARNING Read carefully**

These instructions contain vital information for the installation, use and the proper functioning of the radiator. Failure to adhere with these instructions may cause a fire, serious injury, electric shock or property damage. Keep these instructions.

## **INSTALLATION INSTRUCTIONS AND SAFETY MEASURES**



**RISK OF ELECTRIC SHOCK**

**INSTALLATION MUST BE COMPLETED BY A  
REPUTABLE ELECTRICIAN**

### **IMPORTANT INSTRUCTIONS**

#### **Contents**

1.0	Warnings
2.0	Wire Connection
3.0	Wiring Connection of units in parallel
4.0	Installation of retainer T65
5.0	Fact sheet
6.0	Trouble shooting
7.0	Maintenance

#### **1.0 Warning**

Read these instructions carefully before installation.

- 1.1 Never open the radiator.
- 1.2 To prevent risk of electric shock during installation, turn off power at main disconnect panel.
- 1.3 The power supply must match the voltage of the radiator.
- 1.4 Use CSA/UL connectors for direct connection of the radiator and power wire approved to a temperature of 194 °F/90 °C.
- 1.5 Complete wiring in accordance with local and national codes. Refer to section 2.0
- 1.6 An incorrectly installed radiator may be damaged permanently and could present a risk of electric shock or fire.
- 1.7 The temperature of the radiator must be controlled by a thermostat.
- 1.8 Free standing radiator must be secured to building structure by retainers. Refer to section 4.0.
- 1.9 Wall-mounted radiator must be secured to building structure by typical hooks and installed according to the instructions.
- 1.10 Do not cover the radiator.
- 1.11 This heater is hot when in use. To avoid burns, do not let bare skin touch hot surfaces. Keep combustible materials, such as furniture, pillows, bedding, papers, clothes and curtains away from heater.
- 1.12 Extreme caution is necessary when any heater is used by or near children or invalids and whenever the heater is left operating and unattended.
- 1.13 Do not operate any heater after it malfunctions. Disconnect power at service panel and have heater inspected by a reputable electrician before reusing.
- 1.14 Do not use outdoors.
- 1.15 To disconnect heater, turn controls to off and turn off power to heater circuit at main disconnect panel.
- 1.16 Do not insert or allow foreign objects to enter any ventilation or exhaust opening as this may cause an electric shock or fire, or damage the heater.
- 1.17 A heater has hot and arcing or sparking parts inside. Do not use it in areas where gasoline, paint, or flammable vapors or liquids are used or stored.
- 1.18 Before cleaning, make sure the power has been turned off at the circuit breaker panel and that the heating element of the heater is cool.
- 1.19 The power box on the radiator, must always be at the bottom, right or left side of the radiator.
- 1.20 Do not unscrew and turn the power box.
- 1.21 Use this heater only as described in this manual. Any other use not recommended by the manufacturer may cause fire, electric shock, or injury to persons.

#### **1.22 SAVE THESE INSTRUCTIONS**

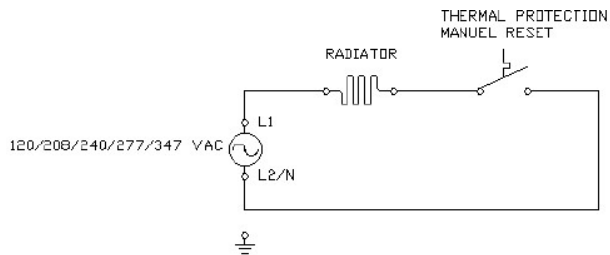


YESTERDAY'S  
COMFORT.

TODAY'S  
PERFORMANCE.

## INSTALLATION INSTRUCTIONS AND SAFETY MEASURES

### 2.0 Wire Connection



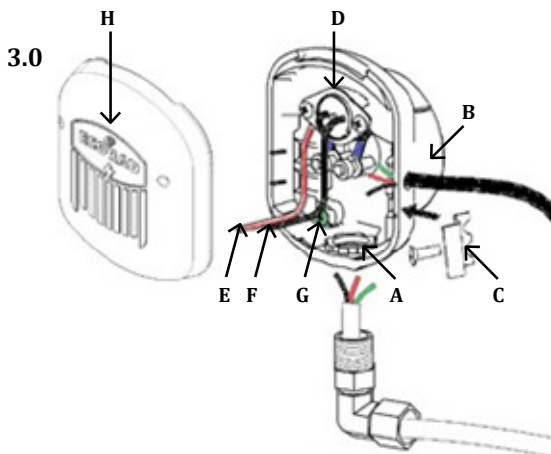
Referring to the electrical box diagram below, and depending on the wire supply orientation, either screw a EMT terminal into EMT hole (A) or punch a hole in the pre-marked slots (B) on the side, use a drill bit the cable diameter. Make connection with CSA/UL wire connector on the appropriate terminals:

Join ground wire to ground screw (G)  
Join power supply L-1 to connection wire (E)  
Join power supply L-2 to connection wire (F)

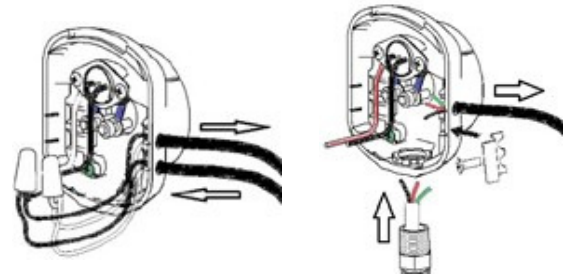
If using pre-marked slots (B), insert the wire in the screw terminal (C) and tighten. If using EMT; tighten with a certified screw terminal of your choice.

#### Power box and components

- |  |                           |
|--|---------------------------|
| (A) = NPT ½ EMT Hole                     | (E) = Connection wire #1  |
| (B) = Pre-marked slots                   | (F) = Connection wire #2  |
| (C) = Screw terminal for pre-marked slot | (G) = Ground screw        |
| (D) = Thermal protection                 | (H) = Reset button access |



### Wiring connection of units in parallel

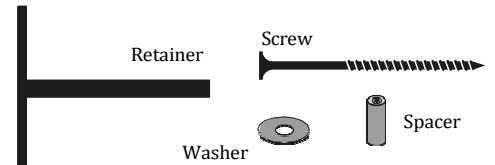


In/out pre-marked slots

In EMT/out pre-marked slot

### 4.0 Installation instructions of the retainers For free Standing Unit - Part# T65

T65 kit includes:



- 4.1 Locate an anchoring point for installation against the wall (ex: stud.) nearest to the center of the radiator.
- 4.2 Place the radiator against the wall where you want to install it.
- 4.3 Insert the screw in the retainer.
- 4.4 Support the retainer using the screwdriver and drag the retainer vertically to the lower side of the head of the radiator between two sections of the radiator, where the anchor point was identified.



YESTERDAY'S  
COMFORT.

TODAY'S  
PERFORMANCE.

## INSTALLATION INSTRUCTIONS AND SAFETY MEASURES

- 4.5 Place the washer on the screw. According to your radiator depth you can have the extension to the retainer before the washer.
- 4.6 Turn the retainer horizontally before reaching the inside section of the radiator closest to the wall and tighten the screw.
- 4.7 Make sure the retainer can't move and the radiator is secured.

**NOTE:** Improper installation of the retainer can cause body injury or property damage.

### 5.0 Fact Sheet

Minimum temperature: -13 °F/-25 °C

Maximum temperature: 194 °F/90 °C

Voltage: 120/208/240/277 V

Voltage: 347 V – Canada only

Phase: 1

Cycle: 60 Hz

Pressure Maximum: 6 Psig



### 6.0 Trouble shooting

1) Check the circuit breaker.

2) Check the thermostat.

3) Reset thermal protection:

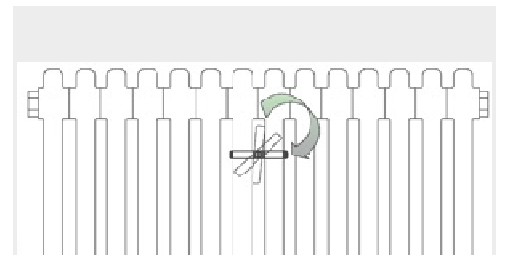
This radiator has a thermal protection which, once the radiator has cooled down, can be reactivated manually by pressing the reset button with a pin through the access hole shown on drawing. Ask an electrician to verify inner connections if problem repeats.

### 7.0 Maintenance

Clean with a damp cloth and soft soap. Do not use chemical products on the radiator.



4.5



4.6

6.0

